

## Industrial Pressure Sensor for Accurate Measurements



### Features

- ➔ Large choice of connectors & threads
- ➔ All Stainless steel
- ➔ Built in digital electronic
- ➔ CANopen protocol via CANbus

### Applications

- ➔ Railway
- ➔ Test benches
- ➔ Instrumentation
- ➔ Navy and shipbuilding applications

The PDS22C is a precision transmitter with CAN interface. The integrated interface has been designed according to the CANopen specification of the organisation CiA. The device profile 404 which is used has been designed by the CiA for the use in measuring and control instruments. This guarantees the compatibility with the systems of other manufacturers.

## Technical specifications

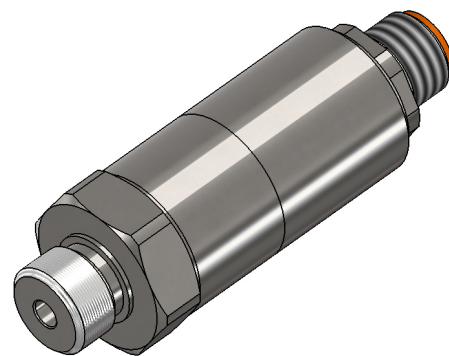
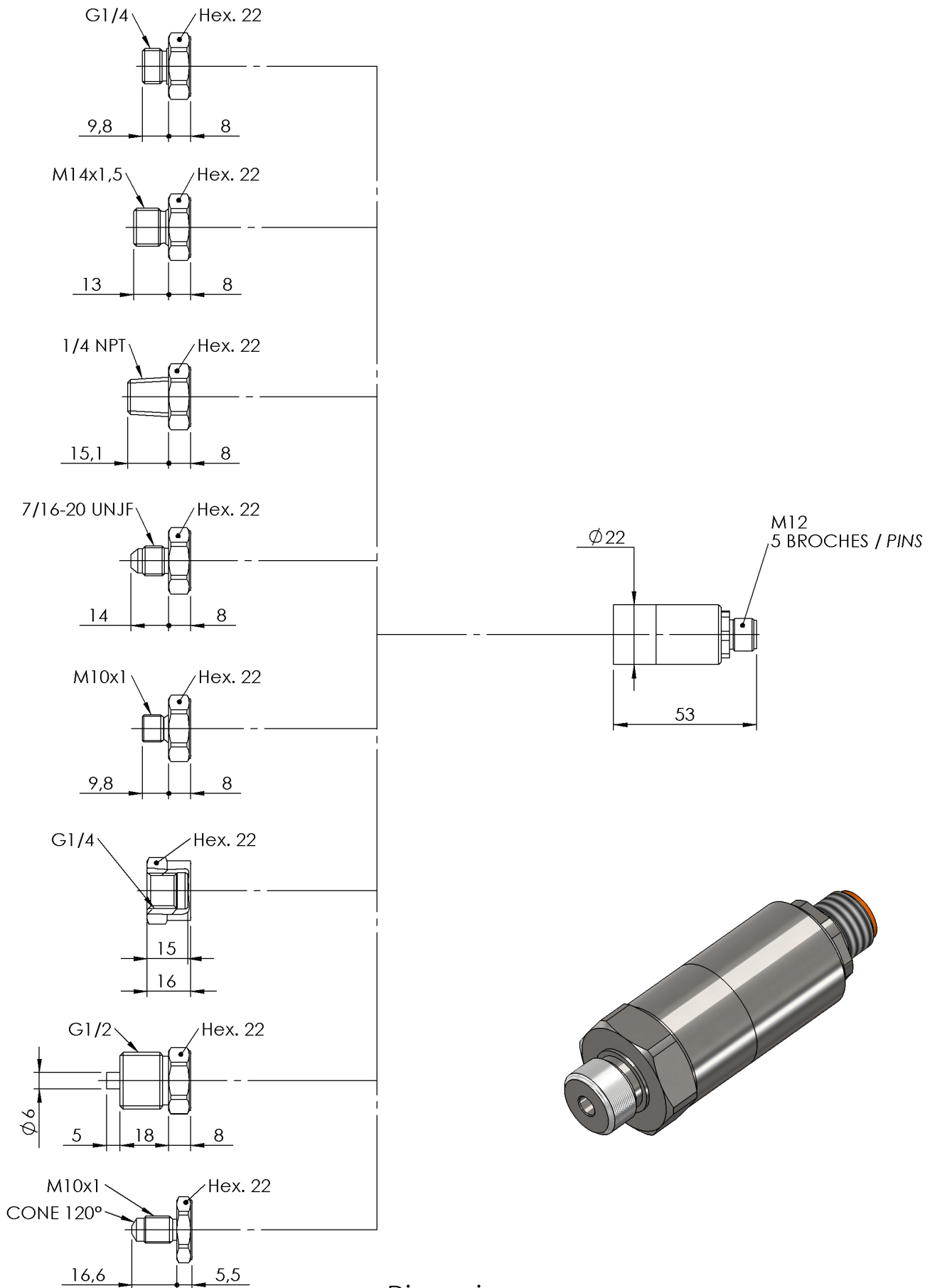
Pressure ranges (FS)	<p>±100mbar ; ±250mbar ; ±500mbar ;</p> <p>250mbar ; 700/1200mbar ; 500mbar ;</p> <p>-1/+3bar ; -1/+5bar ; -1/+10bar ;</p> <p>1bar ; 2bar ; 3bar ; 5bar ; 10bar ; 20bar ; 40bar ; 100bar ; 250bar ; 400bar ; 600bar ;</p> <p>±1.5PSI ; ±3.5PSI ; ±7PSI ;</p> <p>-14.5/+40PSI ; -14.5/+70PSI ; -14.5/+150PSI ;</p> <p>3PSI ; 8000PSI ; 5PSI ; 10PSI ; 15PSI ; 30PSI ; 40PSI ; 70PSI ; 150PSI ; 300PSI ; 500PSI ;</p> <p>1500PSI ; 3000PSI ; 5000PSI</p>
Type	Absolute ; Gage
Type (for ranges > 40 bar)	Sealed Gage
Safe overload	150% FS
Burst pressure	300% FS
Power supply	8 to 30Vdc
Consumption	500mW max.
Insulation	> 1000 MOhms under 50Vdc at ambient temperature

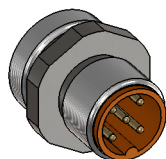
## Technical Specifications

Output at 100%FS	CANOpen
Non linearity and hysteresis combined	±0.1% FS
Non repeatability	±0.02% FS typ.
Signal bandwidth	16bit / 20ms
Compensated temperature range	0 to +60°C Option : -25 to +85°C
Operating temperature range	-40 to +85°C
Combined thermal zero & sensitivity shifts	±0.02% FS/°C
Constant acceleration in linear vibrations	± 0.02% FS/g (frequency 20-2000Hz, 50g max.)
Mechanical shock	100g ½ sinus 1ms
Electrical protection	Protected against polarity inversion
EMC protection	Compliant to EN61000
Electrical connection	M12 Receptacle, 5 pins
Mechanical connection	1/4 Gaz A male ; 1/4 NPT male ; M14x1.5-4h male Option : 1/2 Gaz A male (Gauge) ; 1/4 Gaz female ; 7/16-20 UNJF-3A male - MS33656-4 ; M10x1-4h male with 80° internal cone ; M10x1-4h male 120° cone
Material(s) of wetted parts	Stainless Steel 316L ; Stainless Steel 17-4PH ; Stainless steel 15-5PH
Weight	< 130g without cable
Enclosure protection	IP65 for absolute & sealed gage version

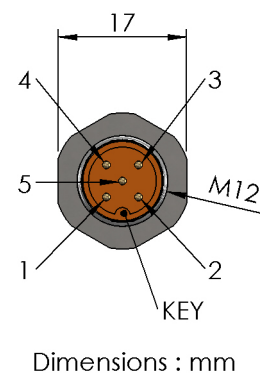
## Codification

Industrial Pressure Sensor for Accurate Measurements	PDS22	C	S	1bar	A	01	19	A	2	1	
Output Signal											
CANOpen		C									
Material											
Stainless Steels			S								
Range											
Example				1bar							
Type											
Absolute					A						
Gage					G						
Sealed Gage					SG						
Mechanical connection											
M14x1.5-4h male						01					
1/2 Gaz A male (Gauge)						06					
1/4 Gaz A male						07					
1/4 Gaz female						08					
7/16-20 UNJF-3A male - MS33656-4						10					
1/4 NPT male						13					
M10x1-4h male with 80° internal cone						19					
M10x1-4h male 120° cone						21					
Electrical connection											
M12 Receptacle, 5 pins							19				
Compensated temperature range											
0 to +60°C								A			
-25 to +85°C								B			
Non linearity and hysteresis combined											
±0.1% FS									2		
Combined thermal zero & sensitivity shifts											
±0.02% FS/°C										1	



**M12 - 5 PINS**

CAN OPEN OUTPUT	PIN
+ EXCITATION	PIN 2
CAN HIGH	PIN 4
CAN LOW	PIN 5
0 VOLT	PIN 1
0 VOLT	PIN 3
SENSOR HOUSING	CONNECTOR HOUSING



Agent :



E.F.E.

L'ESSOR FRANCAIS ELECTRONIQUE

16 Rue Porte a Bateaux - 27540 Ivry-la-Bataille - FRANCE

Tel : 33 (0)2 32 22 35 05 - Fax : 33 (0)2 32 36 93 08

[www.efc-sensor.com](http://www.efc-sensor.com) - [infos@efc-sensor.com](mailto:infos@efc-sensor.com)